

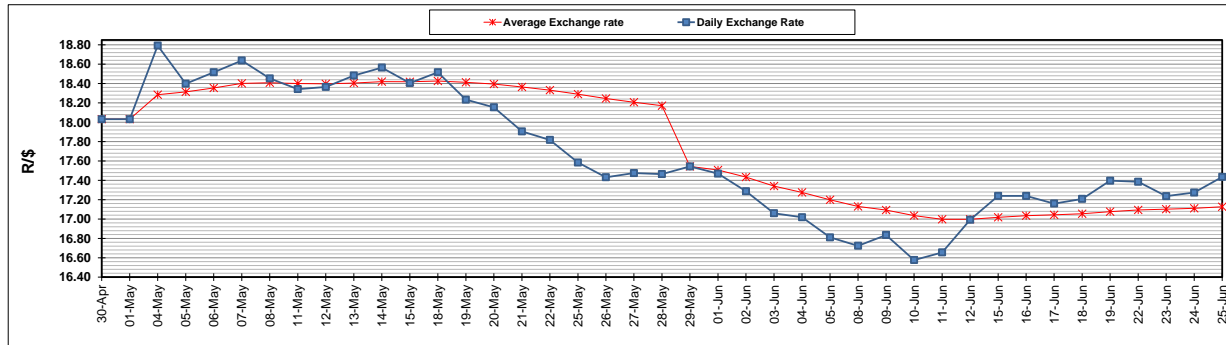
	PETROL 95 ULP	PETROL 93 ULP & LRP	DIESEL 0.05%	DIESEL 0.005%	ILL. PAR.
GAUTENG PUMP PRICE (SA c/l) AS FROM 03/06/2020	1,340.000	1,320.000	-	-	-
WHOLESALE PRICE (SA c/l) AS FROM 03/06/2020	-	-	1,130.560	1,138.960	489.828
SINGLE NATIONAL MAXIMUM RETAIL PRICE	-	-	-	-	597.000
BASIC FUEL PRICE - 25/06/2020 (SA c/l)	564.441	549.993	580.766	583.771	518.716
PRESS RELEASE CONTRIBUTION TO BFP 03/06/2020 - 25/06/2020 (SA c/l)	392.770	382.770	379.630	388.030	285.128
UNIT OVER/(UNDER) RECOVERY - 25/06/2020 (SA c/l)	(171.671)	(167.223)	(201.136)	(195.741)	(233.588)
AVERAGE BASIC FUEL PRICE 29/05/2020 - 25/06/2020	547.896	528.735	550.172	553.955	494.055
AVERAGE UNIT OVER/(UNDER) RECOVERY 29/05/2020 - 25/06/2020	(172.826)	(163.665)	(173.842)	(169.075)	(214.927)

ANALYSIS MOVEMENT OF AVERAGE OVER/(UNDER) RECOVERY

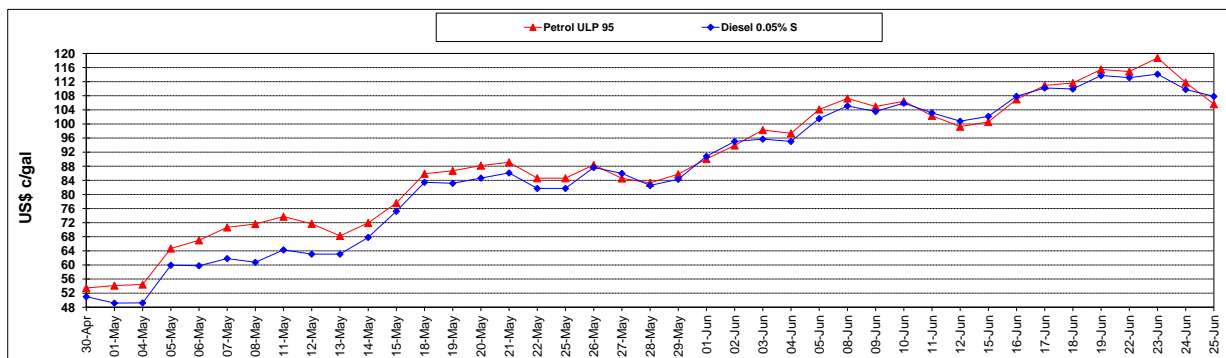
	PETROL 95	PETROL 93	DIESEL 0.05%	DIESEL 0.005%	ILL. PAR.
- MOVEMENT IN INTERNATIONAL PRODUCT PRICES	(206.236)	(195.907)	(207.391)	(202.855)	(245.054)
- MOVEMENT IN EXCHANGE RATE	33.410	32.242	33.549	33.780	30.127
AVERAGE UNIT OVER/(UNDER) RECOVERY 29/05/2020 - 25/06/2020	(172.826)	(163.665)	(173.842)	(169.075)	(214.927)

R/\$ EXCHANGE RATE - (R/\$17.4351 - 25/06/2020)

EXCHANGE RATE USED IN BASIC FUEL PRICE



INTERNATIONAL PRODUCT PRICES OF BASKET USED IN BASIC FUEL PRICE



BASIC FUEL PRICE IN SA CENTS PER LITRE

